



FORGED COMPONENTS
2020/2021



Spoločnosť UMAKOV už viac ako 25 rokov vyrába a predáva komponenty pre nerezové a sklenené zábradlia. Spoločnosť má širokú sieť partnerov a pobočiek na Slovensku, v Českej republike, Poľsku a Maďarsku. Má vlastnú produkciu, obchod a administratívu na ploche viac ako 25 000 m². Vysoká kvalita, rýchle doručenie, viac ako 5000 druhov komponentov na sklade a profesionálna technická podpora robí v súčasnosti z UMAKOVu jedného z lídrov Európskeho trhu v predaji komponentov pre zábradlia. Naše portfólio obsahuje sklenené systémy, prístrešky, schody, bránové príslušenstvo a kované komponenty.



Przez ponad 25 lat firma UMAKOV produkuje i sprzedaje elementy ze stali nierdzewnej oraz skladniki dla balustrad szklanych. Działalność firmy UMAKOV jest realizowana w ich własnych oddziałach oraz sieciach partnerów na Słowacji, w Czechach, Polsce i na Węgrzech. Firma posiada również własną produkcję, przestrzenie handlowe oraz administracyjne o łącznej powierzchni około 25 000 m². Najwyższa jakość, szybka dostawa, ponad 5000 typów komponentów na magazynie oraz profesjonalne wsparcie techniczne sprawia z firmy UMAKOV jednego z liderów na rynku europejskim w sprzedaży elementów do balustrad nierdzewnych. Nasza oferta obejmuje również systemy szklane, zadaszenia, schody, bramy oraz elementy kute.



Az UMAKOV több, mint 25 éve gyárt és értékesít rozsdamentes acél-, és üvegkorlát elemeket. Az UMAKOV üzleti tevékenységét saját leányvállalatain és partner hálózatán keresztül gyakorolja Szlovákiában, Csehországban, Lengyelországban és Magyarországon. A cég saját gyártási tevékenysége, kereskedelmi és adminisztratív központja mintegy 25 000 m² alapterületen helyezkedik el. Csúcs minőség, gyors szállítás, több, mint 5000 raktárkészleten lévő termék, valamint professzionális műszaki támogatás teszik az UMAKOV-ot ma Európa egyik vezető vállalatává a korlát elemek területén. Választékunkban megtalálhatók még üveg rendszerek, előtétök, lépcsők, kaputechnika és kovácsoltvas termékek.



For over 25 years UMAKOV has produced and sold components for stainless steel and glass railings. Umakov business activities are carried out in their own branches and network of partners in Slovakia, Czech Republic, Poland and Hungary. Company also owns their own production, commercial and administrative spaces with total area of about 25 000 sq m. Top quality, fast delivery, over 5000 types of components in stock and professional technical support makes UMAKOV today one of Europe's market leaders in railing components. Our portfolio also includes glass systems, canopies, stairs, gate accessories and forged components.



Firma UMAKOV produziert und verkauft die Komponente für Edelstahl- und Glasgeländer schon länger als 25 Jahren. UMAKOV hat Partnern und Filialen in der Slowakei, in der Tschechischen Republik, in Polen und Ungarn. Das Unternehmen verfügt über eigene Produktion, Geschäft und Betriebsverwaltung auf der Fläche von ca 25 000 m². Hohe Qualität, schnelle Lieferung, mehr als 5000 Arten von Komponenten auf dem Lager und professionelle technische Unterstützung, das alles macht von UMAKOV einer der europäischen Marktführer im Verkauf von Komponenten für Geländer. Unser Portfolio umfasst Glassysteme, Vordachsysteme, Treppen, Tor Zubehör und Schmiedeteile.



Depuis plus de 25 ans UMAKOV produit et vend des composants pour les garde-corps inox et verre. La société UMAKOV dispose d'un réseau de filiales et partenaires en Slovaquie, République Tchèque, Pologne et Hongrie. Elle possède ses propres espaces de production, de vente, au sein de son siège administratif, d'une surface d'environ 25 000 m². Haute qualité, livraison rapide, plus de 5000 types de composants en stock et une assistance technique professionnelle, font aujourd'hui d'UMAKOV un des leaders européens dans le secteur des composants de garde-corps. Notre gamme comprend également des systèmes en verre, auvents, escaliers, accessoires pour portails et pièces forgées.





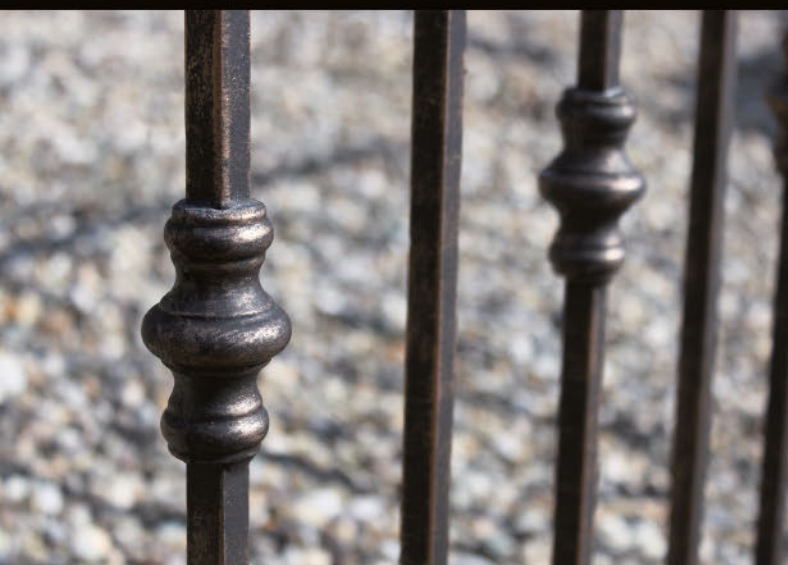


1 KOVANIA
DOOR HANDLES

6

2 HROTY
SPEARS

18



3 NÁVLEKY
SLEEVES

22

4 ROZETY, GULE,
KRYTKY
ROSETTES, BALLS,
CAPS

24





5 LÍSTKY
LEAVES

26

6 TVAROVÉ ELEMENTY
SCROLL ELEMENTS

28

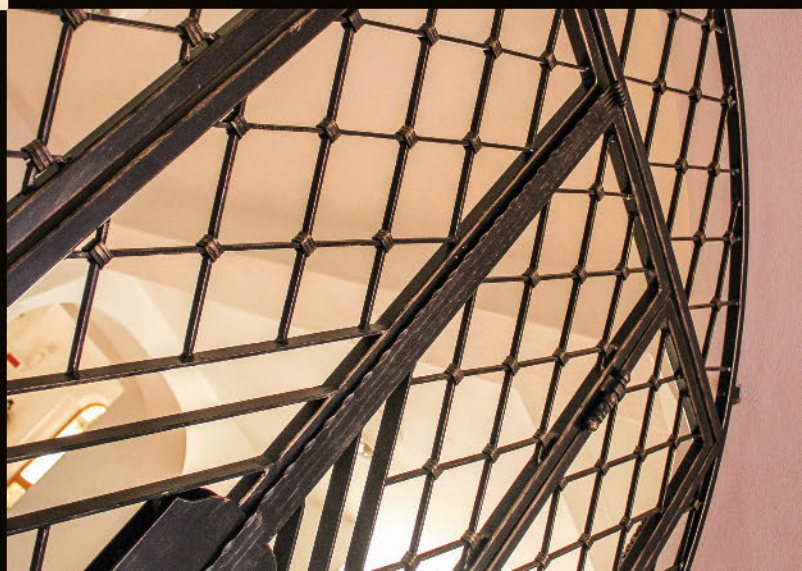


7 SPONY, NITY
U-COLLARS, RIVETS

30

8 MREŽE
GRILLES

32



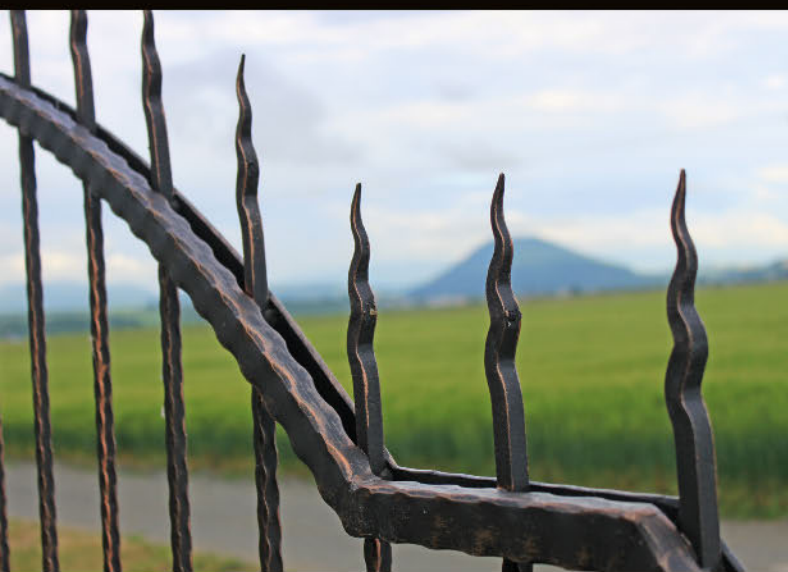
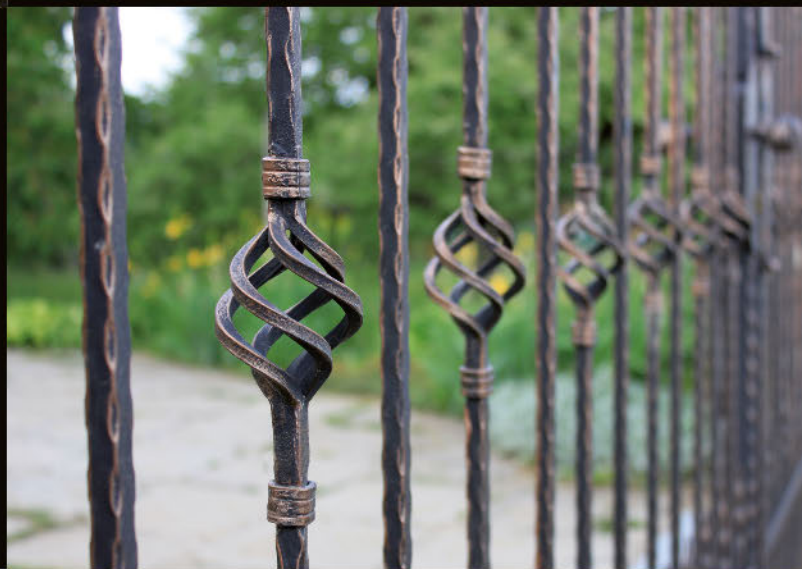


9 ORNAMENTY
ORNAMENTS

34

10 ŠIŠKY
BASKETS

38



11 ZDOBENÝ MATERIÁL
DECORATED MATERIAL

40



12 LOMENÉ OBLÚKY
POINTED ARCHS

42



13 MADLÁ HANDRAILS

44

14 TYČE, STĚLPIKY BARS, POSTS

48



15 DOM, BYT, ZÁHRADA HOUSE, FLAT, GARDEN

52

16 FARBY, PATINY PAINTS, PATINAS

58



1 KOVANIA
DOOR HANDLES

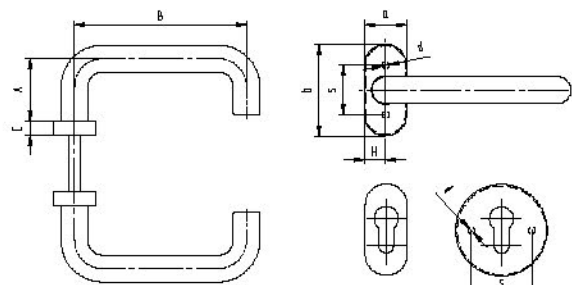




D8/01-i



D8/03-i



D8/03-i D8/01-i

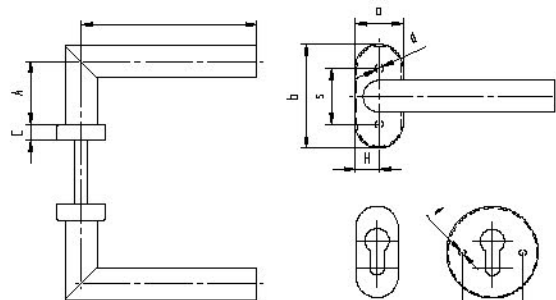
	Quality	Finish	A	B	C	a	b	s	d	H	Model
D8/01-i	AISI304	satin	45	120	10	52	52	38	5	26	K01
D8/03-i						30	65	50		15	



D8/02-i



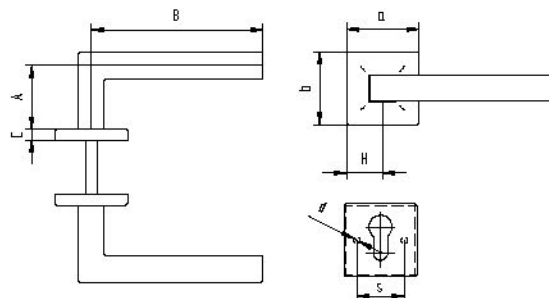
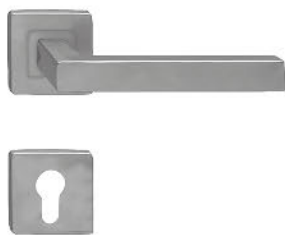
D8/05-i



D8/05-i D8/02-i

	Quality	Finish	A	B	C	a	b	s	d	H	Model
D8/02-i	AISI304	satin	50	120	10	52	52	38	5	26	K01
D8/05-i						30	65	50		15	
D8/05-black		RAL									

new new



	Quality	Finish	A	B	C	a	b	s	d	H	Model
D8/06-i	AISI304	satin	48	126	8	53	53	38	5,5	26,5	K01

new



D2/29



D2/30

	Quality	Finish	A	B	C	a	b	X	H	Model
D2/29	ALUMINIUM	black	109	20	21	36	36	25	18	K03
D2/30	PVC	raw	132	25	14	32	67	30	16	



D2/07-Zn



D2/11-Zn



D2/34-Zn



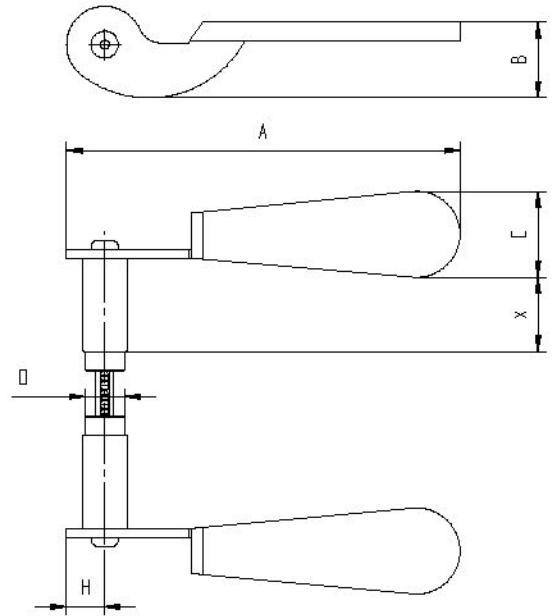
D2/28-Zn



D2/05T-Zn



D2/56



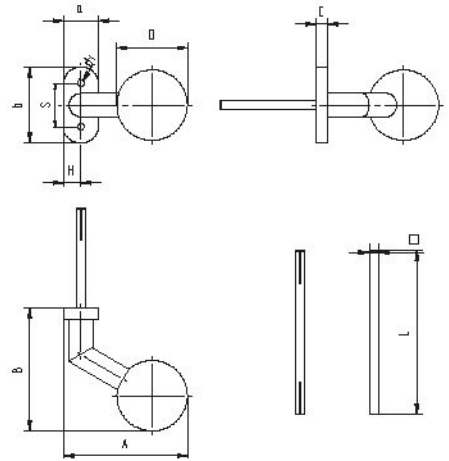
D2/52



D2/57

	Quality	Finish	A	B	C	D	X	H	Model
D2/07-Zn	Fe	Zn	145	60	19	17,5	42	12	K11
D2/11-Zn			132	46	48		28	16	
D2/34-Zn			162	60	40		34	17	K12
D2/28-Zn			145	42	37		38	17	
D2/05T-Zn	Fe	raw	143	60	36	19	41	17	K13
D2/52			145	45	36		49	17	
D2/56			160	48	40		37	18	K14
D2/57			160	64	60		25	19	

top



	Quality	Finish	A	B	a	b	s	d1	C	D	∅	L	H	Model
D8/04-i	AISI304	satín	80	90	30	66	60	5,5	10	52	8	75	15	K11

top

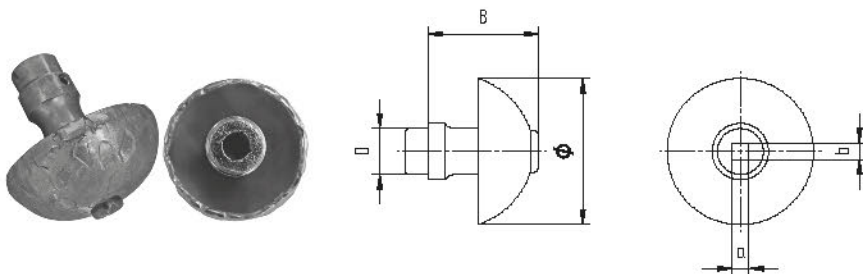


	Quality	Finish	Model
D8/05G-R-i	AISI304	satín	K02,K11

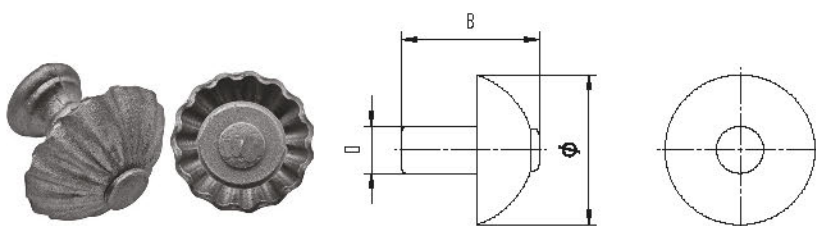
new

	Quality	Finish	Model
D8/05G-L-i	AISI304	satín	K02,K11

new



	Quality	Finish	B	∅	D	axb	Model
D5/11-Fe	Fe	raw	66	60	19	8x8	D0/03 D0/06
D5/11-zn	Fe	Zn	66	60	19	8x8	D0/03 D0/06



	Quality	Finish	B	∅	D	axb	Model
D5/09	Fe	raw	66	70	19,5	-	K13

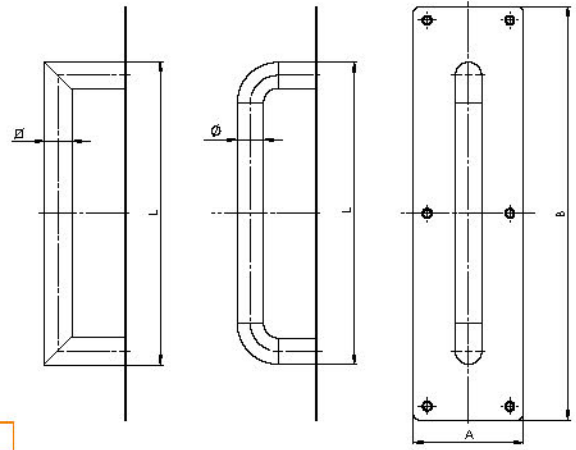
Nedá sa zvärať/Non weldable



DO/07-i



DO/08-i



	Quality	Finish	A	B	L	Ø	□
DB/07-i	AISI304	satin	80	300	220	19	-
DB/08-i	AISI304	satin	80	300	220	-	20x20

new

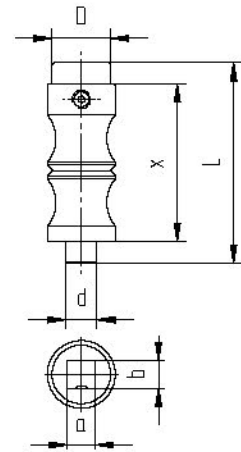


D0/01

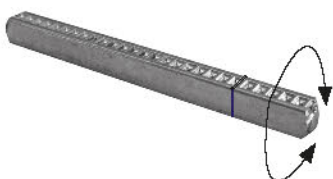
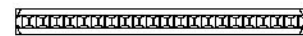
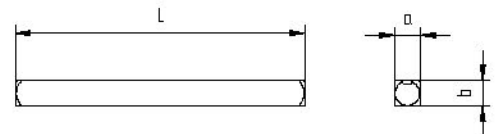


D0/04

	Quality	Finish	a	b	D	L	X	d
D0/01	Fe	raw	8	8	17,5	74	60	10
D0/04	Fe	raw	8	8	17	65	61	10

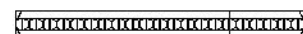
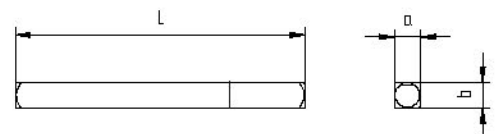


	Quality	Finish	L	a x b
D0/03-Zn	Fe	Zn	70	8 x 8



	Quality	Finish	L	a x b	□
D0/05-Zn	Fe	Zn	87	8 x 8	D5/11...

new





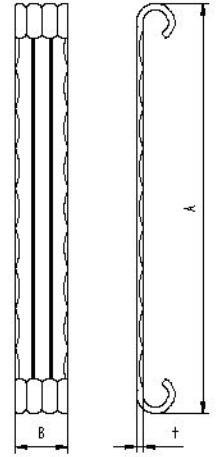
B1/09-...M




B1/09-40V

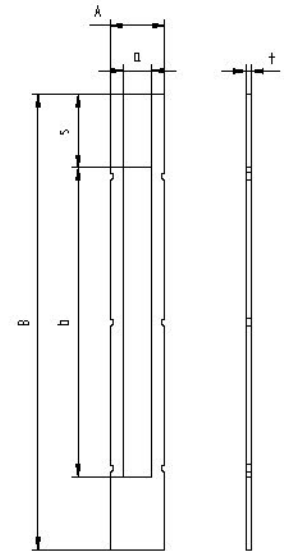


B1/09-50V



	Quality	Finish	A	B	t		
B1/09-40M	Fe	raw	315	40	5	 set BR/50x30-set BR/50x30-set E	
B1/09-40V							
B1/09-50M				60	3		BR/30x30-set BR/30x30-set E
B1/09-50V							

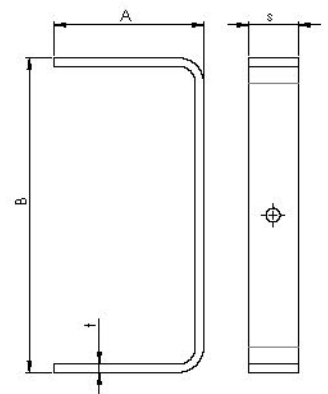
top
top
new
new



	Quality	Finish	A	B	a	b	t	s
B1/34-32A	Fe	raw	32	265	17	180	3	42,5
B1/34-42A			42					

+

	
B1/30-60...	D1/14...



	Quality	Finish	A	B	s	t
B1/33-30	Fe	raw	90	190	30	5
B1/33-40			85		40	

+

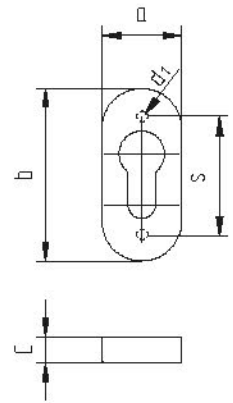
	
B1/30-60...	D1/14...



D1/39F



D8/09-i



	Quality	Finish	a	b	s	d1	C	Model
D1/39F	PVC	black	31	66	48	3,8	3,6	K02
D8/09-i	AISI304	satın	30	66	60	6	10	

new



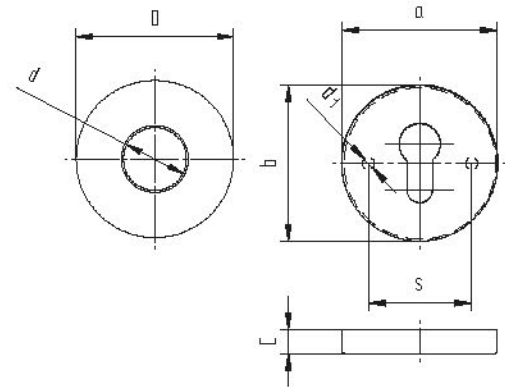
D1/46K



D1/46F

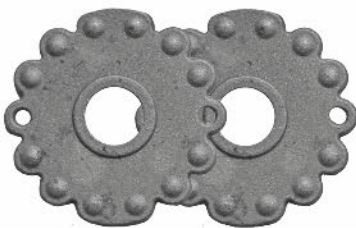


D8/08-i

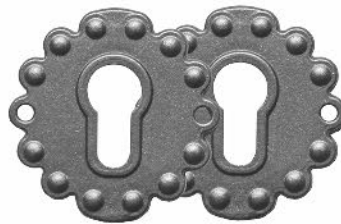


	Quality	Finish	a	b	D	s	d	d1	C	Model
D1/46K	Fe	raw	-	-	60	-	21	-	4	K13
D1/46F										
D8/08-i	AISI304	satın	62	62	-	38	-	6	10	K01

new



D1/32K



D1/32F

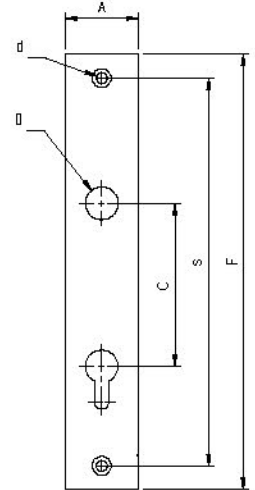
	Quality	Finish	D	s	d	d1	C	Model
D1/32K	Fe	raw	70	68	18	4,5	3	K11, K12
D1/32F								



D1/55-90



D1/18-90



	Quality	Finish	A	F	C	D	s	d	t	Model
D1/55-90	Fe	raw	60	260	90	20	226	6	3	K13
D1/18-90	Fe	raw	47	246	90	20	188	6,2	2	K13



D1/02



D1/19

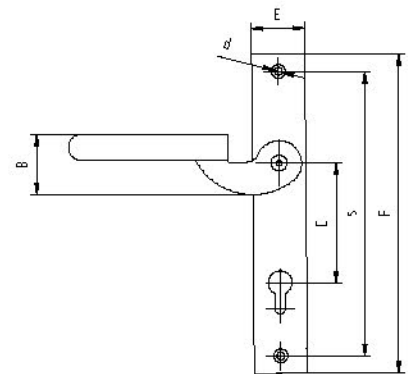
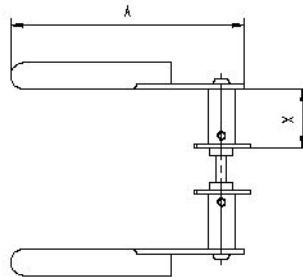
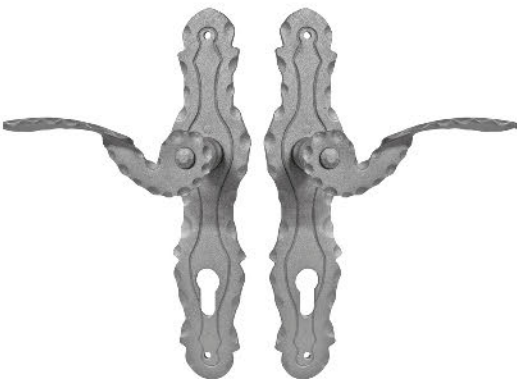


D1/03

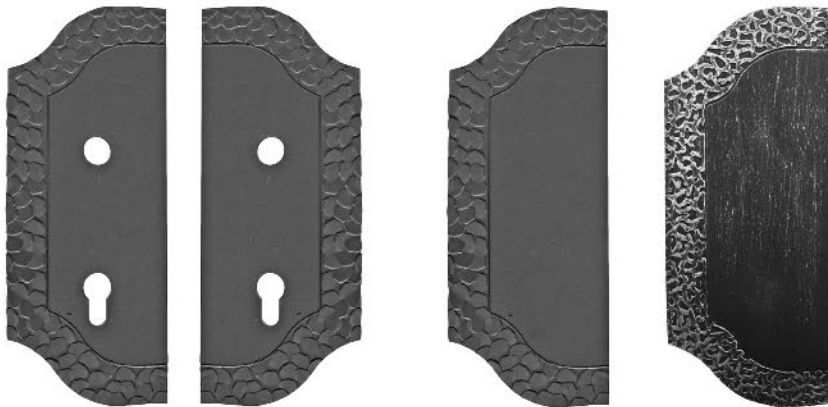
	Quality	Finish	A	F	C	D	s	d	t	Model
D1/02	Fe	Zn	40	240	90	18	215	6,5	3	K11, K12
D1/19	Fe	Zn	40	278	90	18	200	6,5	3	K11, K12
D1/03	Fe	Zn	50	240	90	18	213	6	3	K11, K12

top

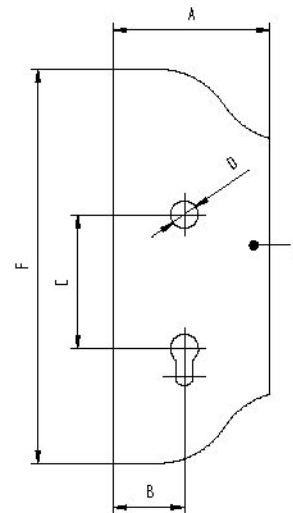
new




	Quality	Finish	A	B	C	E	F	d	s	X
D12/07-90	Fe	raw	143	60	90	68	260	6	226	45



D1/14AL D1/14AR D1/14A-S D1/14A-S-T

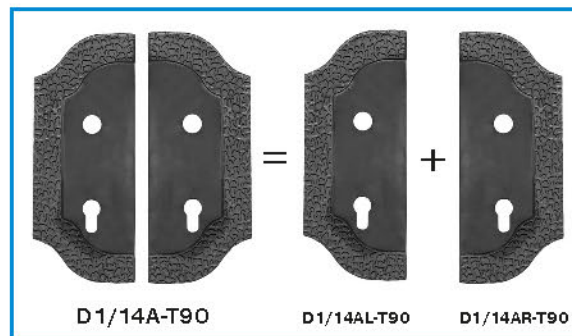


	Quality	Finish	A	B	C	D	F	t	Model	
D1/14AL	Fe	raw	106	48	90	19	265	3	K01 - K03 K11, K12 K21 - K23	BR/30x30-set S BR/30x30-set ES
D1/14AR				-	-	-			-	
D1/14A-S			-	-	-	-	-			
D1/14A-S-T			-	-	-	-	-			

top



D1/14AL-T90 D1/14AR-T90



	Quality	Finish	A	B	C	D	F	t	Model
D1/14AL-T90	Fe	raw	117	46	90	20	268	3	K01 - K03 K13
D1/14AR-T90									K21 - K23



D1/35-L-90 D1/35-R-90 D1/35-S

	Quality	Finish	A	B	C	D	F	t	Model
D1/35-L-90	Fe	raw	100	48	90	20	280	2,5	K01 - K03 K13
D1/35-R-90									K21 - K23
D1/35-S			110	-	-	-	285		



D1/34-L



D1/34-R

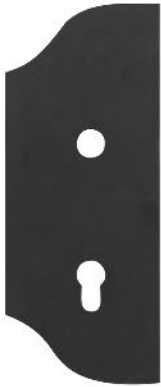


D1/34-S-L



D1/34-S-R

	Quality	Finish	A	B	C	D	F	t	Model
D1/34-L	Fe	raw	160	60	90	22	275	3	K01-K03 K11-K13 K21-K23
D1/34-R				-	-	-			-
D1/34-S-L			-	-	-	-	-		
D1/34-S-R			-	-	-	-	-		



D1/14H2
D1/14H3

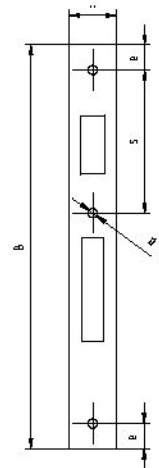
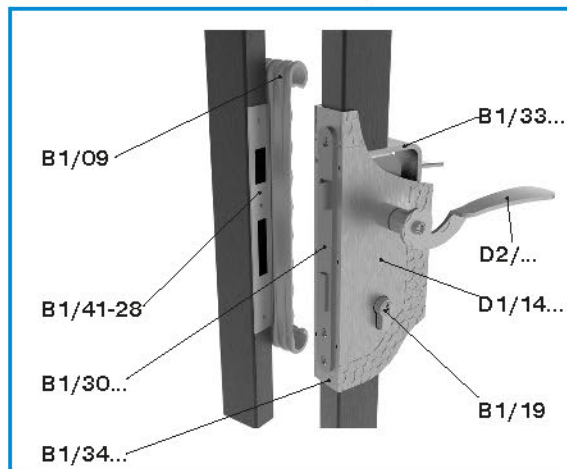


D1/14H3-S



D1/65H2

	Quality	Finish	A	B	C	D	F	t	Model
D1/14H2	Fe	raw	105	48	90	19	265	2	K01 - K03 K11, K12 K21 - K23
D1/14H3				-	-	-		-	
D1/14H3-S			-	-	-	-	-		
D1/65H2			48	90	18,5	2	K01 - K03 K11, K12, K21		



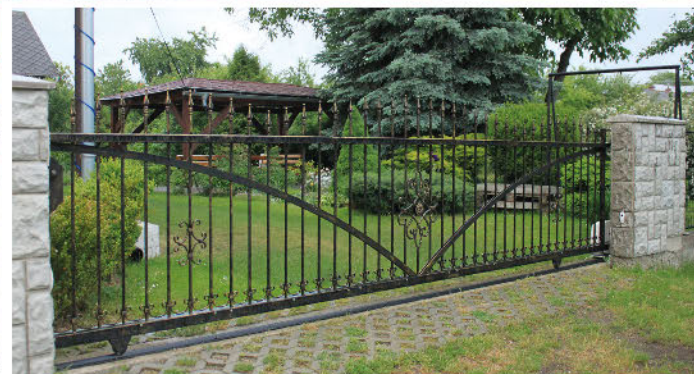
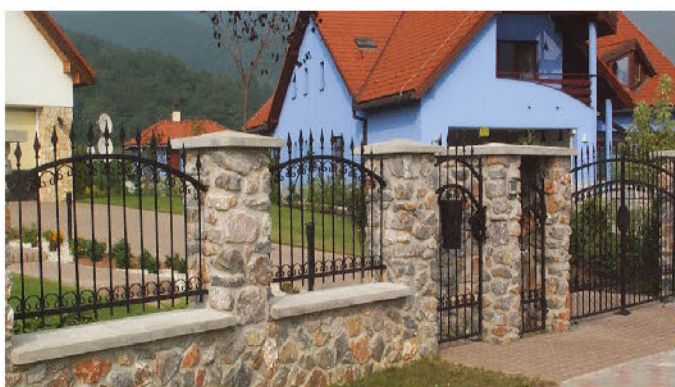
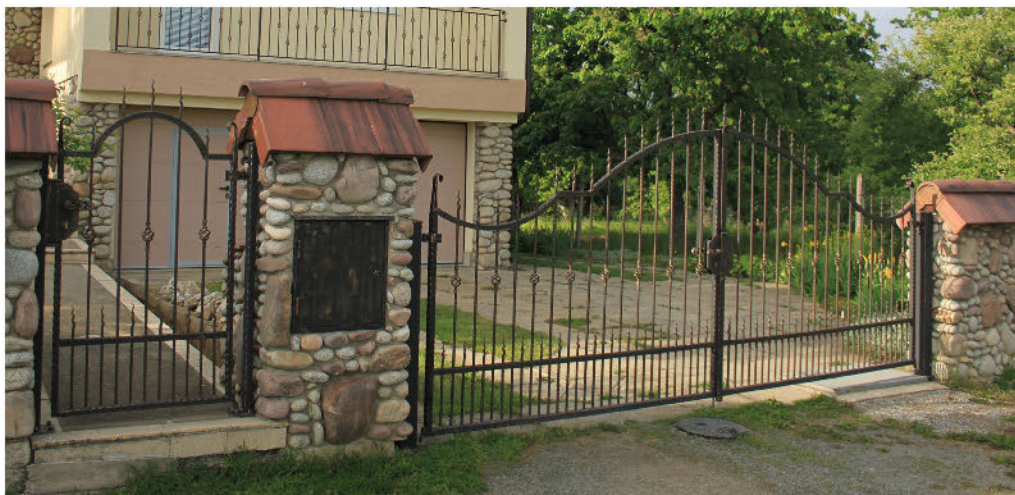
	Quality	Finish	A	B	C	D	e	t	d	s
B1/41-28	Fe	raw	28	240	-	-	15	2	6,5	85

+

B1/30-60..

													
			D	-	-	-	D17	D17	D19	D19	-	19	D19,6
			Hmax	26	16	18	16	17	17	19	16	30	36
Model		K01	K02	K03	K11	K12	K13	K14	K21	K22	K23		
 set	BR/30x30-set (E)				✓								
	BR/30x30-set S(E)				✓	✓							
	BR/50x30-set (E)				✓	✓							
	BR/40x40-set (E)	✓	✓	✓	✓	✓			✓		✓		
	BR/60x40-set (E)	✓	✓	✓	✓	✓			✓		✓		
	BR/80x40-set (E)	✓	✓	✓	✓	✓			✓		✓		
 	B1/52J-30x30				✓								
	B1/39J-50x30		✓		✓				✓				
	B1/52J-50x30		✓	✓	✓	✓	✓		✓				
	B1/58J-50x30	✓	✓	✓	✓	✓			✓				
	B1/39J-40x40, BB/58J-40x40		✓		✓				✓				
	B1/58J-40x40		✓		✓				✓				
	B1/52J-40x40		✓	✓	✓	✓	✓		✓				
	B1/60-40x40		✓	✓	✓	✓	✓		✓				
	B1/58J-60x40	✓	✓	✓	✓	✓			✓				
	B1/59-60x40	✓	✓	✓	✓	✓			✓				
	B1/58J-80x40	✓	✓	✓	✓	✓			✓		✓		
	B1/48-80x40	✓	✓	✓	✓	✓			✓		✓		
	D1/14AL, D1/14AR	✓	✓	✓	✓	✓			✓	✓	✓		
	D1/14H2, D1/14H3	✓	✓	✓	✓	✓			✓	✓	✓		
	D1/14AL-T90, D1/14AR-T90	✓	✓	✓				✓	✓	✓	✓		
	D1/34-L42, D1/34-R42	✓	✓	✓				✓	✓	✓	✓		
	D1/35-L-90, D1/35-R-90	✓	✓	✓				✓	✓	✓	✓		
 	D1/39F		✓										
	D8/09-i		✓										
	D1/46K, D1/46F							✓	✓		✓		
	D8/08-i	✓											
	D1/32K, D1/32F				✓	✓							
	D1/55-90							✓	✓		✓		
	D1/18-90							✓	✓		✓		
	D1/02				✓	✓							
	D1/03				✓	✓							
	D1/19				✓	✓							





2 HROTY
SPEARS





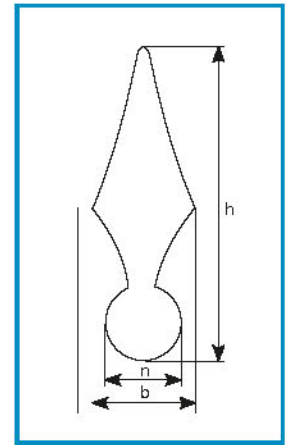
art.	h	n
B1/04G-150		
B1/04G-350		12x12
B1/04G-500		



art.	h	n
B1/04H-150		
B1/04H-350		12x12
B1/04H-500		



art.	h	n
B1/04S-150		
B1/04S-350		12x12
B1/04S-900		



art.	h	n
B1/05H-350		12x12
B1/05H-500		12x12



decorated

art.	h	n	b
B1/05G-A-150			
B1/05G-A-350		12x12	15
B1/05G-A-500			



art.	h	b	n
E2/102-90	32	23	
E2/102-125	39	24,5	



art.	h	b	n
E2/105-98	35	20	
E2/105-135	40	25	



art.	h	b	n
E2/121-125	57	12	



art.	h	b	n
E2/122-130	57	12	



art.	h	b	n
E2/115-152A	160	55	29



art.	h	b	n
E2/125-82	20x20	16x16	
E2/125-125	27x27	20x20	



art.	h	b	n
E2/128A-140	40	29	
E2/128A-165	57,5	27	
E2/128A-180	60	29,5	



art.	h	b	n
E2/131-88	28,5	21,5	
E2/131P-120	35	30	



art.	h	b	n
E2/135-120	42,5	12x12	



art.	h	b	n
E2/136-125	63	24	
E2/136A-80	46	21	



art.	h	b	n
E2/108A-130	60	12	



art.	h	b	n
E2/133G-115	58	20,5	



art.	h	b	n
E2/133-80	44	15	
E2/133P-80	42		
E2/133-140	70	26	
E2/133A-115	68	21,5	



art.	h	b	n
E2/137-105	63	18x21	
E2/137-120	68	24x24	



art.	h	b	n
E2/144B-150	40	12x12	



art.	h	b	n
E2/145-200	19	12x12	



art.	h	b	n
E2/146-60	30	22x22	
E2/146A-95	25	11,5x11,5	



art.	h	b	n
E2/140-150	49	12x12	



art.	h	b	n
E2/148A-76	43	16	
E2/148-110	56	19,5	



art.	h	b	n
E2/159-125	55	19,5	



art.	h	b	n
E2/186-100	44	12	
E2/186-120	55	18	



art.	h	b	n
E2/153-165	68	24	



art.	h	b	n
E2/151-150	29	12x12	
E2/151-900			



art.	h	b	n
E2/185-150	42	12x12	



art.	h	b	n
E2/152-900	30	12x12	



art.	h	b	n
E2/171-55	35,5x35,5	16x16	



art.	h	b	n
E2/156-140	60	14x14	



art.	h	b	n
E2/147-110	50	25	
E2/147-125	59	30	



art.	h	b	n
E2/149A-110	54	25	
E2/149A-125	62	29	



art.	h	b	n
E2/159-125	65	19,5	



art.	h	b	n
E2/155-160	23	23x23	



art.	h	b	n
E2/183-115	22	17,6x17,6	



art.	h	b	n
E2/175-107	26	15x15	
E2/175-142	29	16,5x16,5	



3 NÁVLEKY
SLEEVES

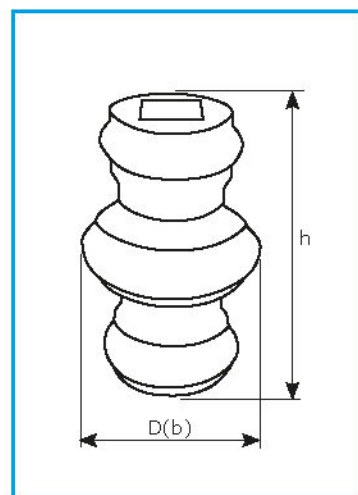




art.	□	h	D
E4/009A-12,5x12,5		63	38
E4/009A-14,5x14,5		67	46
E4/009A-16,5x16,5		67	44



art.	□	h	D
E4/010-13x13		63	44
E4/010-15x15			



art.	□	h	D
E4/012-12,5x12,5		68	41x41
E4/012-14,5x14,5		68	41x41
E4/012-16,5x16,5		67	40x40



art.	□	h	D
E4/013-12,5x12,5		21	34x34
E4/013-14,5x14,5		21	38x38



art.	□	h	D
E4/016-12,5x12,5		21	40
E4/016-14,5x14,5			
E4/016-16,5x16,5			



art.	□	h	D
E4/027-16x16		146	43x43



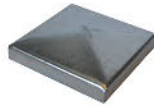
art.	□	h	D
E4/023-12,5x12,5		44	38x38

4 ROZETY, GULE, KRYTKY
ROSETTES, BALLS, CAPS





art.	a	t
E2/254-30x30		
E2/254-40x40		
E2/254-50x50		1,5
E2/254-60x60		
E2/254-80x80		
E2/254-100x100		
E2/254-120x120		



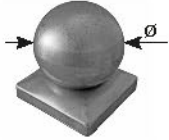
art.	a	t
E2/254-40x40Zn		
E2/254-50x50Zn		
E2/254-60x60Zn		1,5
E2/254-80x80Zn		
E2/254-100x100Zn		
E2/254-120x120Zn		
E2/254-150x150Zn		



art.	a	quality	finish	t
A/254-30x30				
A/254-40x40				
A/254-50x50				
A/254-60x60		AISI304	satín	1,2
A/254-80x80				
A/254-100x100				
A/254-120x120				



art.	a	quality
E2/258-30x30		PVC
E2/258-40x40		
E2/258-50x50		
E2/258-60x60		
E2/258-80x80		
E2/258-100x100		



art.	a	h	Ø	t
E2/261-40x40	47	40		
E2/261-50x50	58	50		
E2/261-60x60	69	80	0,65	
E2/261-80x80	89	80		
E2/261-100x100	110	100		



art.	a	h	t
E2/262-80x80	136	1,5	
E2/262-100x100	140	2,5	



art.	a	t	h
B1/03-JPL-30x30x2			300
B1/03-JPL-40x40x2			



art.	a	t	h
B1/03-P/201-30x30x2,5			300
B1/03-P/201-40x40x2,5			



art.	Ø
E/361-15	
E/361-20	
E/361-25	
E/361-30	
E/361-35	
E/361-40	
E/361-50	
E/361-60	



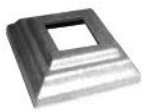
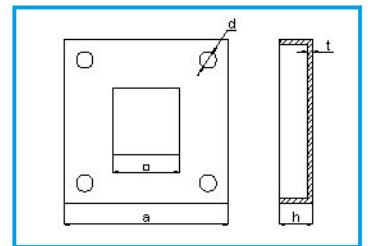
art.	Ø	t
E/365-40		1,2
E/365-50		1,6
E/365-60		
E/365-70		1,2
E/365-80		
E/365-100		1,25
E/365-120		
E/365-150		



art.	Ø
E/372-20	
E/372-25	
E/372-30	



art.	Ø	d
E/378-30		12,5x17



art.	□	axa	h	t
E2/214-31x31	80x80	19	4	



art.	axa	□	h	t
E2/228-13-40	40x40	13x13	18	2,5



art.	axa	□	h	t
E2/275-14x14	44x44	14,5x14,5	20	1
E2/275-20x20	57x57	22x22	22	
E2/275-25x25		27x27		
	80x80			
E2/275-30x30		31,5x31,5		1
				30
E2/275-40x40		42x42		
	100x100			
E2/275-50x50		52x52		



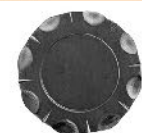
art.	□	axa	t
E2/219-26x26			
E2/219-31x31	100x100		10



art.	axa	□	t
E2/226-13-50	52x52	13x13	8



art.	axa	t
E2/219	100x100	10



art.	Ø	t
E2/238	92	4



art.	a	t	4xd
B1/50-80x80x8			
B1/50-100x100x8		10	
B1/50-120x120x8		8	
B1/50-150x150x8		12	

5 LÍSTKY
LEAVES





art.	D	t
E2/010P-68		
E2/010P-97		1,5
E2/010P-120		1,2



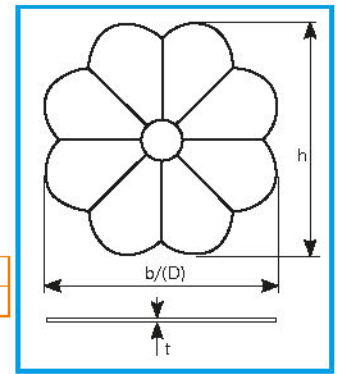
art.	D	t
E2/026-60		2,5



art.	D	t
E2/211-90		2



art.	h	b	t
E2/236	140	145	4



art.	D	t
E2/042A-35	35x40	1,2



art.	D	t
E2/042A-45	47x47	1,5



art.	D	t
E2/042A-60	80x46	1,5
E2/042A-80	80x60	



art.	D	t
E2/276-95		1,5



art.	h	b	t
E2/227-155	77	3,6	



art.	h	b	t
E2/272-120	60	4	



art.	h	b	t
E2/434-50	70	60	2
E2/434-70	95	34	2



art.	h	b	t
E2/437-115	40	2	



art.	h	t	b
E2/300L-90-12			65
E2/300R-90-12			



art.	h	t	b
E2/307L-115-12			40
E2/307R-115-12			



art.	h	b	t
E2/329L-230	130	5	
E2/329R-230			



art.	h	b	t
E2/347L-140	130	102	5
E2/347R-140			



art.	h	b	t
E2/349L-240	60	4	
E2/349R-240			



art.	h	b	t
E2/372L-200	95	4	
E2/372R-200			



art.	h	b	t
E2/374L-165	125	4	
E2/374R-165			



art.	h	b	t
E2/335-120	73		
E2/335-125	73		
E2/335-135	85		4
E2/335-155	110		



art.	h	b	t
E2/415-85	60		
E2/415-113	86	2	
E2/415-145	83		



art.	h	b	t
E2/413-85	44	1	



art.	h	b	t
E2/423-95	90		
E2/423-125	110	2	
E2/423-150	140		



art.	h	b	t
E2/337A-170	295	64	2,5



art.	h	b
E2/432	170	62

6 TVAROVÉ ELEMENTY
SCROLL ELEMENTS



		MODEL TOP			MODEL S		
"C" scroll							
material	art	h	b	art	h	b	
12x6	E/103TOP-80		66				
	E/103TOP-95		80	E/103S-100		80	
	E/103TOP-100		86	E/103S-120		70	
	E/103TOP-115		76	E/103S-130		76	
	E/103TOP-120		76				
	E/103TOP-130		80				
	E/103TOP-140		80	E/103S-160		80	
	E/103TOP-150		80				
12x12	E/103TOP-230		126				
	E/104TOP-120		80				
"S" scroll							
material	art	h	b				
12x6	E/203TOP-200		86				
	E/203TOP-230		100				
	E/203TOP-280		110				
"S" scroll							
material	art	h	b	art	h	b	
12x6	E/241TOP-150	70/40		E/241S-150	70/40		
	E/241TOP-170	76/46		E/241S-170	80/47		
	E/241TOP-200	86/60					
	E/241TOP-230	120/80		E/241S-220	100/80		
	E/241TOP-260	116/86		E/241S-270	106/70		
	E/241TOP-300	130/70					
	E/241TOP-330	130/86					
"O" scroll							
material	art	h					
12x6							
	E/349TOP-120						
12x6	E/349TOP-125						
"G" scroll							
material	art	h	b				
12x6	E/352TOP-100		76				

		MODEL TOP				
material	art	h	b	art	h	b
12x6	E/305TOP-270	260	66	E/333TOP-275	260	76

		MODEL TOP				
material	art	h	b	art	b	h
12x12	E/245TOP-230		120/60	E/315TOP-70		130

material	art	h	bxh	art	h	b
12x6	E/323-185-2		96x200	E/344-160		120

material	art	h	n	
12x6	E/340-100			
	E/340-120			
12x6	E/347-100			
	E/347-120			

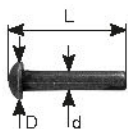
7 SPONY, NITY
U-COLLARS, RIVETS



	12x12-C	12x12-R	18x12-R	24x12-C	24x12-R
art.	L	art.	art.	art.	art.
P/055-16x3-3m	3000	E/055-12x12-C	E/055-12x12-R	E/055-18x12-R	E/055-24x12-C
P/062-16x1,2	1000		E/062-12x12-R	E/062-18x12-R	
P/041-14x4-2m P/041-14x4	2000 4000				
P/058-14x4-2m	2000				



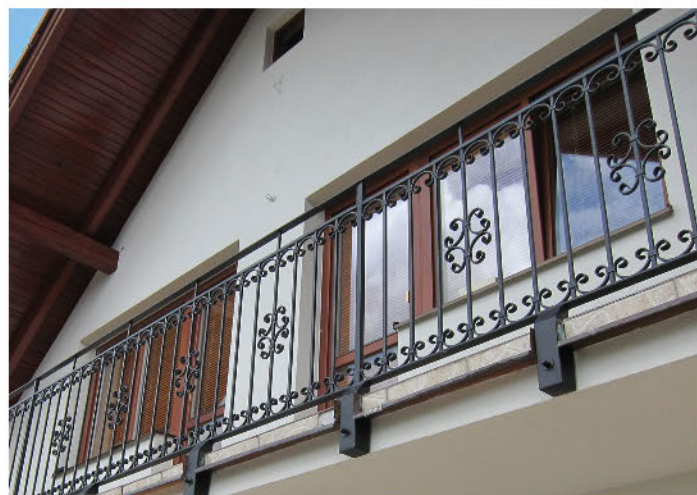
art.	D	d	t
NIT/N-14	14	5	1,2
NIT/N-17	17		



art.	D	d	L
NIT/6x30-32	10	6	30-32

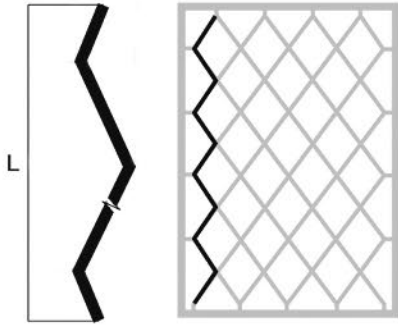


art.	D	d	L
NIT/04-6x30	18	6	36

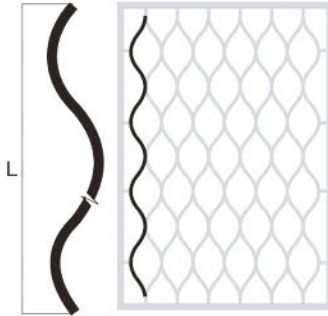


8 MREŽE
GRILLES

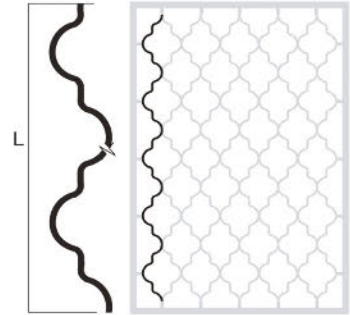




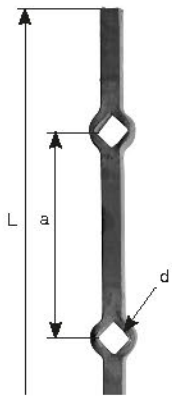
art.	□	L	pcs/m
P/060-12x6	235	5,5	



art.	□	L	pcs/m
P/070-12x6	2650	5,5	
P/070-12x12	2600		



art.	□	L	pcs/m
P/080-12x6	2400	5,5	



art.	□	a	d	L
P/096-14x14	140	15x15	2000	



art.	□	a	d	L
P/097-12x12	120	13x13		
P/097-14x14	140	15x15	2000	
P/097-16x16	150	17x17		



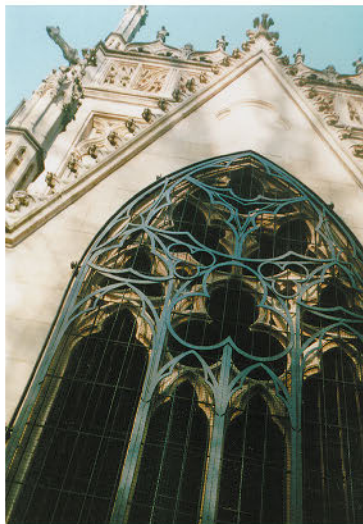
art.	□	a	L	material
P/086A-12x12	125	2000	P/035-12x12	



art.	□	a	d	L
P/098-14x14	140	16x16	2000	



art.	b	h	material
Z1/07E	70	200	P/002-30x5



9 ORNAMENTY
ORNAMENTS

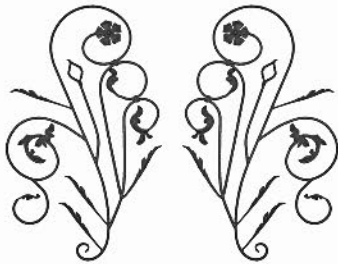
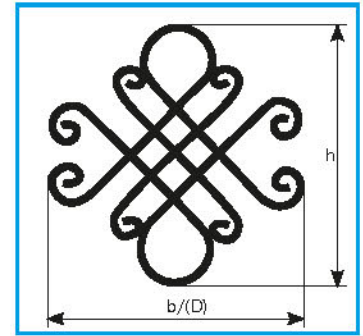




art.	b x h	material
F/1/06	135x960	16x8



art.	b x h	material
F/27-530	630x420 P/036A-12x12	



art.	b x h	material
F/28A-L	1120x680 P/11-D12	
F/28A-R		



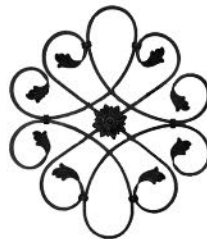
art.	b x h	material
F/29	580x440	16x8
	620x380	



art.	b x h	material
F/30A	800x700	16x8



art.	b x h	material
F/33B-240	240x240	11x6



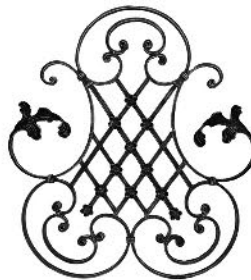
art.	b x h	material
F/34A-550	650x610	16x8



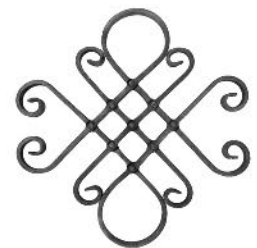
art.	b x h	material
F/35-575	675x400	16x8



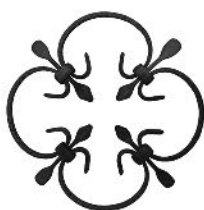
art.	b x h	material
F/41A-450	450x450	12x6



art.	b x h	material
F/50-710	710x640 P/123-16x8	



art.	b x h	material
F/52-410	400x410	16x8



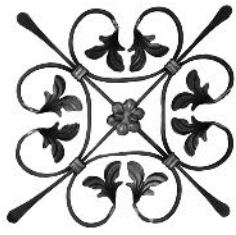
art.	b x h	material
F/53-250	250x250	10x5



art.	b x h	material
F/56-300	300	12x12



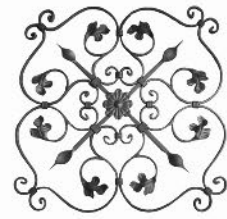
art.	b x h	material
F/62A	655x350	10x10



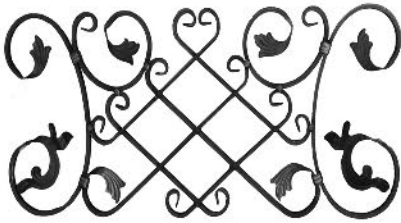
art.	b x h	material
F/76-340	340x340	12x6



art.	b x h	material
F/79	720x360	12x6



art.	b x h	material
F/89	386x390	10x6



art.	b x h	material
F/86-16x8	370x880	16x8



art.	b x h	material
F/90	386x390	10x5



art.	bxh
F/68	12x960



art.	b x h	material
F/94A	766x225	14x6



art.	b x h	material
F/95	1112 x 290	14x6



art.	h x b	material
F/104	376x300	12x12/12x6



art.	b x h	material
F/27-SMALL	330x290	12x6



art.	b x h	material
F/38-240	240x240	P/030-12x6



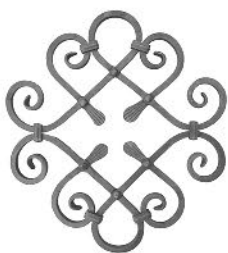
art.	b x h	material
F/45-1000	226x1000	D14



art.	b x h	material
F/105	410x480	16x8



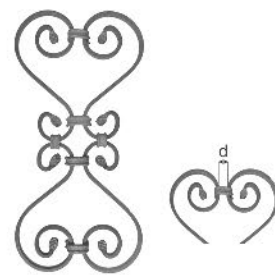
art.	b x h	D
F/44-800	170x800	14



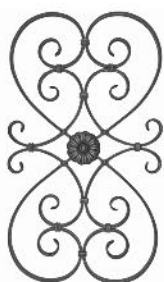
art.	b x h	material
F/51-460	460x410	12x12



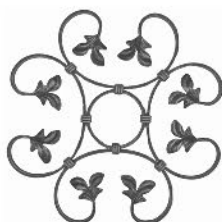
art.	b x h	material
F/55-400	300x400	11,6x11,6



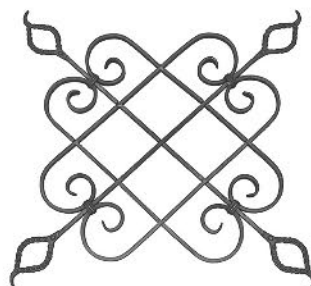
art.	b x h	material	d	b
F/72	200x410	12x6	12x12	60



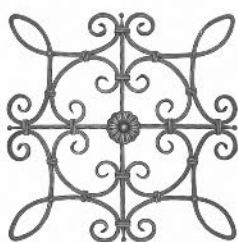
art.	b x h	material
F/74	440x800	16x8



art.	b x h	material
F/75	426x415	12x6



art.	b x h	material
F/77A	870x870	16x8



art.	b x h	material
F/80	666x666	12x12



art.	b x h	D
F/106-L	830x880	12
F/106-R		



art.	b x h	D
T/10/824-L	316x740	16x8
T/10/824-R		



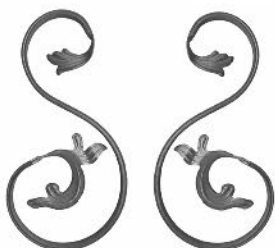
art.	b x h	material
T10/820A	330x870	12x6



art.	b x h	material
F/28/L	680x1090	12x12 <i>new</i>



art.	b x h	material
F/106A/R	830x880	12x12 <i>new</i>



art.	b x h	material
E/241ZL-410	410x206	P/123-15,6x8
E/241ZR-410		

10 ŠIŠKY
BASKETS

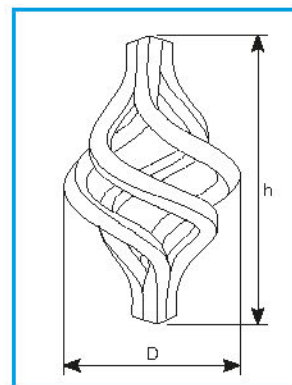




art.	h	material	D
E/501-10	116	10x10	45
E/501-12	130	12x12	68
E/501-14	130	14x14	83
E/501-16	146	16x16	82
E/501B-20	160	20x20	96



art.	h	material	D
E/585-12	130	12x12	60



art.	material	D
E/582-6	6x6	70



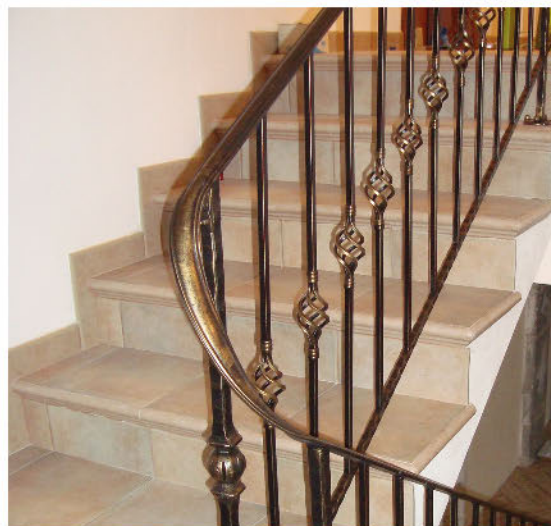
art.	h	n	D
E4/029-45	46	24	30



art.	h	n	D
E4/028-85	86	40x40	48

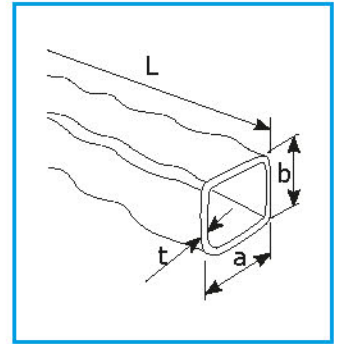


art.	h	D
E4/008-90	93	63



11 ZDOBENÝ MATERIÁL DECORATED MATERIAL





art. ax bxt	L
P/201-12x12x1,5-3M	3000
P/201-12x12x1,5-6M	6000
P/201-16x16x1,5-3M	3000
P/201-20x20x2-3M	
P/201-25x25x2,5-3M	3000
P/201-30x30x2,5-3M	
P/201-30x30x2,5-6M	6000
P/201-40x40x2,5-3M	3000
P/201-40x40x2,5-6M	6000
P/201-50x50x2,5-3M	
P/201-60x60x2,5-3M	
P/201-80x80x2,5-3M	3000
P/201-100x100x3-3M	
p/201-120x120x3-3M	

art. ax bxt	L
P/201-30x20x2-3M	
P/201-30x40x2,5-3M	
P/201-30x50x2,5-3M	3000
P/201-40x20x2-3M	
P/201-60x40x2,5-3M	
P/201-60x40x3-3M	

art. ax b-L	L
P/030-12x6-3M	3000



art. ax b-L	L
P/002N-30x5-3M	3000

art. ax b-L	L
P/041N-30x8-3M	3000

art.(a x b)	L
12x12-3M	3000
12x12-6M	
14x14-6M	6000
16x16-6M	

art.(a x b)	L
12x6-3M	3000
12x6-6M	
14x5-6M	6000
14x7-6M	
16x8-6M	6000
30x5-3M	3000
30x5-6M	
40x5-6M	6000
40x8-6M	

art. ax b	L
P/002B-20x5-3M	
P/002B-25x5-3M	3000
P/002B-30x5-3M	
P/002B-30x5-6M	6000
P/002B-40x5-3M	3000
P/002B-50x5-3M	



art. ax b	L
P/041-25x8-3M	3000
P/041-25x8-6M	6000
P/041-30x8-3M	3000
P/041-30x8-6M	6000
P/041-40x9-3M	3000

art. ax b - L	L
P/035A-12x12-3M	3000
P/035A-12x12-6M	6000
P/035A-14x14-3M	
P/035A-16x16-3M	3000
P/035A-25x2 5-3M	

art. ax b	L
P/101-8-3M	
P/101-10-3M	3000
P/101-12-3M	
P/101-14-3M	

art. ax b	L
P/111-12x12-3M	3000
P/111-14x14-3M	
P/111-16x16-3M	



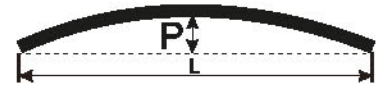
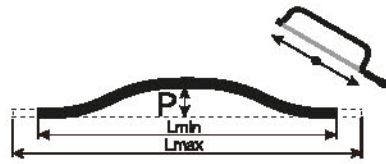
art.(a x b x t)	L
12x12x1,5-6M	
14x14x1,5-6M	
16x16x1,5-6M	
30x30x2,5-6M	6000
40x40x2,5-6M	
50x50x2,5-6M	
60x60x2,5-6M	

art.(a x b x t)	L
30x20x2-6M	
40x20x2-6M	
40x30x2,5-6M	6000
50x30x2,5-6M	
60x40x3-6M	

art. L	axb	L
PD/L-6M	34x34 42x1,5	6000

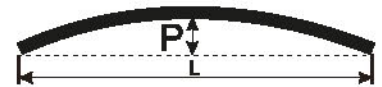
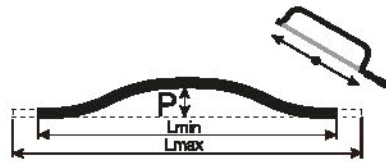
12 LOMENÉ OBLÚKY POINTED ARCHS





art. material	Lmin-Lmax	P
LO-100-30x5	800-1000	150
LO-130-30x5	1000-1300	
LO-170-30x5	1300-1700	
LO-200-30x5	1700-2000	200
LO-240-30x5	1810-2400	
LO-295-30x5	2210-2950	
LO-385-30x5	2810-3850	
LO-440-30x5	3410-4400	250
LO-580-30x5	4410-5800	300

art. material	L	P
JO-194x20-30x5	1940	
JO-245x20-30x5	2450	200
JO-295x20-30x5	2950	



art. material	Lmin-Lmax	P
LO-100-P/002B-30x5	800-1000	150
LO-130-P/002B-30x5	1000-1300	
LO-170-P/002B-30x5	1300-1700	
LO-200-P/002B-30x5	1700-2000	200
LO-240-P/002B-30x5	1810-2400	
LO-295-P/002B-30x5	2210-2950	
LO-385-P/002B-30x5	2810-3850	
LO-440-P/002B-30x5	3410-4400	250
LO-580-P/002B-30x5	4410-5800	300

art. material	L	P
JO-194x20-P/002B-30x5	1940	
JO-245x20-P/002B-30x5	2450	200
JO-295x20-P/002B-30x5	2950	



13 MADLÁ
HANDRAILS





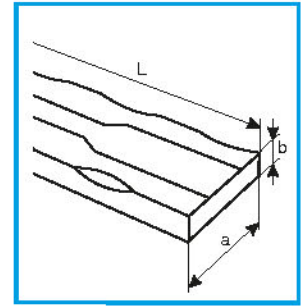
art.	axb	L
P/010-40x5-3M		3000
P/010-40x8-3M		



art.	axb	L
U1-P/010-40x5		600
U1-P/010-40x8		



art.	axb	L
U2-P/010-40x5		85
U2-P/010-40x8		200



art.	axb	L
U3-P/010-40x5		200
U3-P/010-40x8		85



art.	axb	L
P/015-40x11-3M		3000
P/015-45x12-3M		
P/015-50x14-3M		



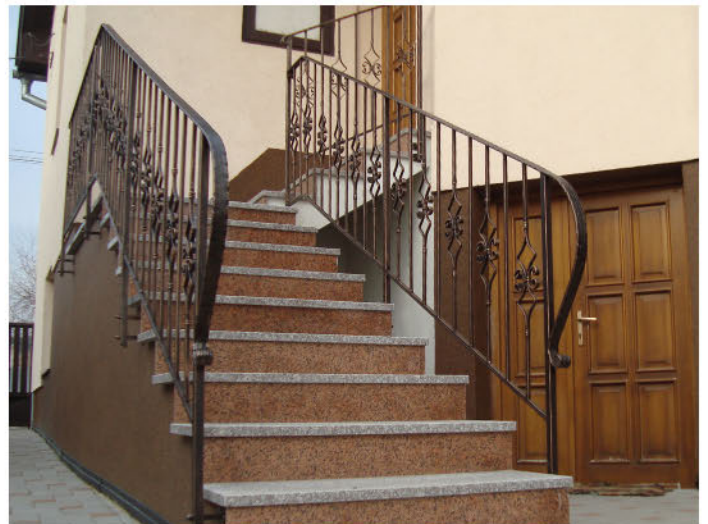
art.	axb	L
U1-P/015-40x11		600



art.	axb	L
U2-P/015-40x11		100



art.	axb	L
U3-P/015-40x11		200





art.	axb	L
P/014-40x10-3M		3000
P/014-50x10-3M		3000

new

art.	axb	L
P/050-14x3-3M		
P/050-40x8-3M		3000
P/050-50x10-3M		



art.	axb	L
P/002-40x5-3M		3000
P/002-50x5-3M		

art.	axb	L
P/016-40x5-3M		3000

art.	axb	L
P/018-40x5-3M		3000
P/018-50x5-3M		

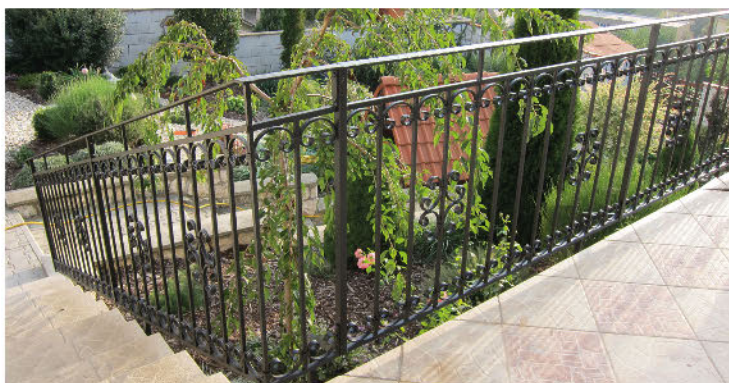


art.	axb	L
P/021-48x20-3M		3000

art.	axb	L
P/022-48x20-3M		3000

art.	axb	L
P/044-48x20-3M		3000

art.	compatibility
P3/01-45	P/021-48x20-3M P/022-48x20-3M P/044-48x20-3M





art. axb	Quality	L
WB/D42-L2000	Beech	2000
WB/D42-L2500		2500
WB/D42-L3000		3000
WD/D42-L2000	Oak	2000
WD/D42-L2500		2500
WD/D42-L3000		3000

new
new
new

art. axb	Quality	L
WB/40x40-L2000	Beech	2000
WB/40x40-L2500		2500
WB/40x40-L3000		3000

art. axb	Quality	L
WS/45x45-L3000	Spruce	3000

art. axb	Quality	L
WS/45x35-L3000	Spruce	3000



art. axb	Quality	L
WS/45x37-L3000	Spruce	3000

art. axb	Quality	L
WS/45x36-L3000	Spruce	3000

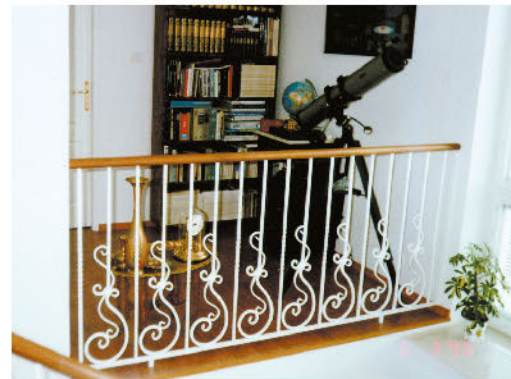
art. axb	Quality	L
WS/45x45-R-L3000	Spruce	3000

art. axb	Quality	L
WS/45x20-L3000	Spruce	3000



art. color	b	L
Z1/25-black	60	90
Z1/25-white		

art.	b	L
Z1/15	110	230



14 TYČE, STĚLPIKY BARS, POSTS





art.		
T12-12x12		
D	b	h
12x12	180	900



art.		
T12N-12x12		
D	b	h
12x12	180	900



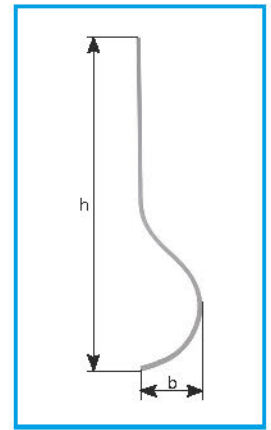
art.		
T13-12x12		
D	b	h
12x12	195	900



art.		
T13N-12x12		
D	b	h
12x12	185	900



art.		
T19-12x12		
D	b	h
12x12	185	900



art.		
T19N-12x12		
D	b	h
12x12	170	900



art.		
T29/1-12x12		
D	b	h
12x12	190	900



art.		
T29N/1-12x12		
D	b	h
12x12	175	900



art.		
T12N-T10/702-1		
D	b	h
12x12	205	960
T10/702-1		



art.		
T13N-P/035A-12		
D	b	h
12x12	180	900
P/035A-12		



art.		
T19N-P/035A-12		
D	b	h
12x12	185	900



art.		
T10/102T		
D	b	h
12x12	182	900
P/035A-12		



art.		
T11/102T		
D	b	h
12x12	182	900
P/035A-12		



art.		
T10/812A		
D	b	h
12x12	180	900
P/035A-12		



art.		
T10/820A		
D	b	h
12x6	330	870



art.		
T10/744		
D	b	h
12x12	146	900
P/123-12		



art.		
F/68		
D	b	h
12x12	220	950



art.		
T10/324T		
D	b	h
12x12	96	900
P/123-12		



art.		
T11/324T		
D	b	h
12x12	96	900
P/123-12		



art.		
T10/801A		
D	b	h
12x12	120	900



art.		
T/125-12x12		
D	b	h
12x12	12x12	1000



art.		
T10/823		
D	b	h
12x12	280	900



art.		
T10/338A		
D	b	h
12x12	130	900



art.		
T10/740A		
D	b	h
12x12 12x6	220	900



art.		
T10/777-A		
D	b	h
12x12	160	900



art.		
T10/780		
D	b	h
12x12	140	900
P/36A-12		



art.		
T10/776		
D	b	h
12x12	86	900
P/036A		



art.		
T10/741		
D	b	h
12x12	170	900
P/036A-12		



art.		
T10/745		
D	b	h
12x12	160	900
P/123-12		



art.		
T10/815		
D	b	h
12x6	166	410



art.		
T10/027		
D	b	h
12x12 12x6	290	900



art.		
T10/745B		
D	b	h
12x12	160	900



art.		
T10/824-L		
D	b	h
16x8	320	740



art.		
T10/824-R		
D	b	h
16x8	320	740



art.		
T10/821		
D	b	h
12x12	310	900
P/036-12x12		



art.		
E2/151-900		
D	b	h
12x12	36	900
P/036-12x12		



art.		
T10/715-E		
D	b	h
14x14	36	83



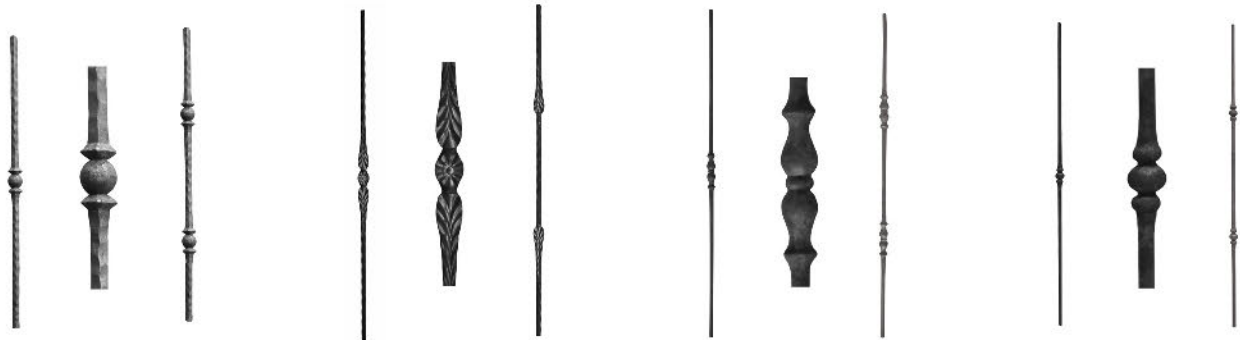
art.		
T10/717A-E		
D	b	h
12x12	60	200



art.		
T10/766B-E-12x12		
D	b	h
12x12	25	115



art.		
T10/768A-E-12x12		
D	b	h
14x14	33	84



art.		
T10/715-1		
D	b	h
12x12	36	1000
P/111-12		

art.		
T10/715-2		
D	b	h
12x12	36	1000
P/111-12		

art.		
T10/702-1		
D	b	h
12x12	36	900
P/035A-12		

art.		
T10/702-2		
D	b	h
12x12	34	900
P/035A-12		

art.		
T10/786-1		
D	b	h
12	26	1000

art.		
T10/786-2		
D	b	h
12	26	1000

art.		
T10/787-1		
D	b	h
12	28	1000

art.		
T10/787-2		
D	b	h
12	28	1000



art.		
T10/734-1		
D	b	h
12	36	900

art.		
T10/734-2		
D	b	h
12	36	900

art.		
T12-0-1T		
D	b	h
12x12	12x12	900

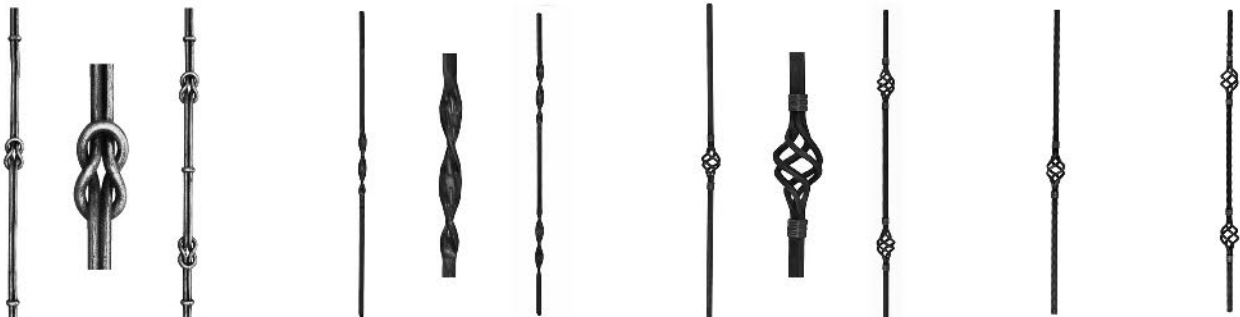
art.		
T12-0-2T		
D	b	h
12x12	12x12	900

art.		
T10/785-1		
D	b	h
8	26	1000

art.		
T10/785-2		
D	b	h
8	26	1000

art.		
T10/705-1		
D	b	h
12	27	1000

art.		
T10/705-2		
D	b	h
12	27	1000



art.		
T10/735-1		
D	b	h
2x12	60	1000

art.		
T10/735-2		
D	b	h
2x12	60	1000

art.		
T10/759A-1		
D	b	h
12x12	26	900

art.		
T10/759A-2		
D	b	h
12x12	26	900

art.		
T10/501		
D	b	h
12x12	68	900

art.		
T11/501		
D	b	h
12x12	68	900

art.		
T10/501T		
D	b	h
12x12	68	900
P/035A-12		

art.		
T11/501T		
D	b	h
12x12	68	900
P/035A-12		



art.		
T10/702-25x25		
D	b	h
25x25	68	1200
P/035-25x25		

art.		
T10/765-25x25		
D	b	h
25x25	33	1200

art.		
T10/715-25x25		
D	b	h
25x25	67	1200
P/111-25		

art.		
T10/787-1B		
D	b	h
12x12	28	1000

new

15 DOM, BYT, ZÁHRADA
HOUSE, FLAT, GARDEN





art.	material	color	dimensions
L/01-L	Cast iron	black	460x250x800



art.	material	color	dimensions
L/45	Cast iron	black	480x320x845



art.	material	color	dimensions
L/27-M	Cast iron	black	340x250x550
L/27-V			450x330x850



art.	material	color	dimensions
L/36	Cast iron	black	275x200x475



art.	material	color	dimensions
L/34	Cast iron	black	350x100x895



art.	material	color	dimensions
L/46	Cast iron	black	300x280x710



art.	material	L	Ø
L/05-110	Brass	110	1/2"



art.	material	L	Ø
L/05-140	Brass	140	1/2"



art.	material	L	Ø
L/63	Brass	100	1/2"



art.	material	axb
O6/30A	Fe	140x115



art.	material	axb
V1/21	Cu	800x1300



art.	material	color	dimensions
S1/13-T	Fe	black	480x400



art.	material	color	dimensions
L/04-L	Cast iron	black	330x120x120



art.	material	finish	dimensions
I4/10-Fe	Fe	raw	270x135



art.	material	color	dimensions
O5/10	Fe	black	350x105x200



art.	material	finish	h
K1/40	Fe	lacquer	1000



art.	material	finish	h
K1/42	Fe	lacquer	1000



art.	material	finish	axb	h
K2/10	Fe	lacquer	670x400	360



art.	material	finish	b	h
K4/4.29	Fe	lacquer	800	1800



art.	material	color	dimensions
V2/21	ALUMINIUM	black	266x410



art.	material	color	dimensions
V2/21-Cu	ALUMINIUM	Cu	266x410



art.	material	finish	dimensions
J9/01-18x18	Fe	raw	18x18x26
J9/01-20x20			20x20x35
J9/01A-28x28			28x28x35
J9/01-D20			D20x43



art.	material	color	h
N1/09-L	Cast iron	black	810

art.	material	color	h
N1/09-R	Cast iron	black	810

art.	material	color
N2/23-set	ALUMINIUM	black+green



art.	material	color	dimensions
K4/69-125	Fe	black+silver	125x150
K4/69-150			150x200
K4/69-200			200x275

art.	material	finish	dimensions	material
E/317J-135-12x6	Fe	raw	135x260	12x6



art.	use	D	d	t
Q1/B01-125x6	Fe	125	22,2	6

art.	use	D	d	P	t
Q1/L01-125-80	INOX	125	22,2	80	7,26
Q1/L01-125-120				120	
Q1/L01-125A	Fe			40	8,3

art.	use	D	d	t
Q1/R01-125x1,6	Fe	125	22,2	1,6
Q1/RN01-125x1	INOX			1



art.	use	size
Q2/08-07	polyester	7
Q2/08-09	+	8
Q2/08-10	latex CB	9

art.	quality	ml
Q5/01GF-300	vinylester	300
Q5/01GF-400		410

art.	quality	ml
Q5/01GF-300 Nordic	vinylester	300
Q5/01GF-400 Nordic		410

art.	quality	ml
Q5/01TK-300	vinylester	280
Q5/01TK-400		410



art.	quality	ml
Q5/01TK-300 Winter	vinylester	280
Q5/01TK-400 Winter		410

art.	quality	ml
Q5/01GFP-300	vinylester	300
Q5/01GFP-400		410

new
new

art.	quality	M	L
Q5/04	PVC	17	216

art.	ml	use
Q5/03-300		hobby
Q5/03-400		professional



art.	M	quality
DIN 1587	M6	Fe+Zn
DIN 1587	M8	
DIN 1587	M10	

art.	M	L	quality
DIN 975M	8x1000	Zn	Fe+Zn 4,6
DIN 975M	10x1000	Zn	
DIN 975M	12x1000	Zn	

art.	M	quality	L
D4/27-M10		Fe+Zn	130
A19/27-M6		AISI304	140
A19/27-M8			
A19/27-M10			

art.	M	L	quality
Q5/06-8x100CE			Fe+Zn
Q5/06-10x120CE			



B2/01

B2/01-P

art.	quality	dimensions
B2/01R-12x6	Fe+Zn	150x30, 12x6

art.	quality	dimensions
B2/01R-30x5	Fe+Zn	150x30, 30x5

art.	quality	dimensions
B2/01-12x6	Fe	L50, 12x6

art.	quality	dimensions
B2/01-30x5	Fe	L50, 30x5
B2/01-P/002-30x5		



art.	quality	h	L
Q4/04-100	PE	0,1m	100m



art.	quality	h	L
Q4/04-500-23	PE	0,6m	130m



art.	dimensions
Q7/04	340x200



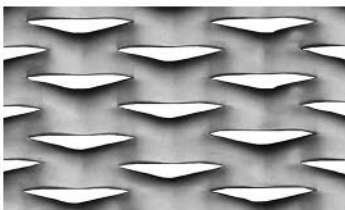
art.	M	L	quality
Q8/VIDI-6x110			SDS
Q8/VIDI-6x160			
Q8/VIDI-8x110			
Q8/VIDI-8x160			
Q8/VIDI-8x210			
Q8/VIDI-10x210			
Q8/VIDI-12x110			
Q8/VIDI-12x210			



art.	specification
Q8/15	2,6 kW, 400V/50Hz



art.	M
CNC-TAP	6-12



art.	axb	t
EMBASSY	2000x1000	1



art.	axb	t
ST/45x13	1250x1600	3



art.
J9/02-25kg

16 FARBY, PATINY
PAINTS, PATINAS





J10/01-...



J10/02-...



J10/03-...



J10/04-...



J10/07-...

Polyvinyl color - Zn (Satin)

art.	color	volume (l)
J10/01-08	graphite	0,8
J10/01-50	graphite	5,0
J10/02-08	black	0,8
J10/02-50	black	5,0
J10/02-100	black	10,0
J10/03-08	white	0,8
J10/03-50	white	5,0
J10/04-08	brown	0,8
J10/04-50	brown	5,0
J10/07-08	green	0,8




J09/01-...



J09/02-...



J09/03-...



J09/04-...

Rustical Color - Zn (Satin)

art.	color	volume (l)
J09/01-08	graphite	0,8
J09/01-50	graphite	5,0
J09/02-08	black	0,8
J09/02-50	black	5,0
J09/04-08	brown	0,8
J09/04-50	brown	5,0





art.	color	volume (l)
WS-0003	graphit	2,5

art.	color	volume (ml)
J08/03-Zn gray	gray, 90% Zn	400

art.	color	volume (ml)
J08/03-Zn polish	gray, 90% Zn	400

art.	color	volume (ml)
J08/01	black	400

Patina color - Zn



J01/Ag...



J01/Cu...



J01/Au...

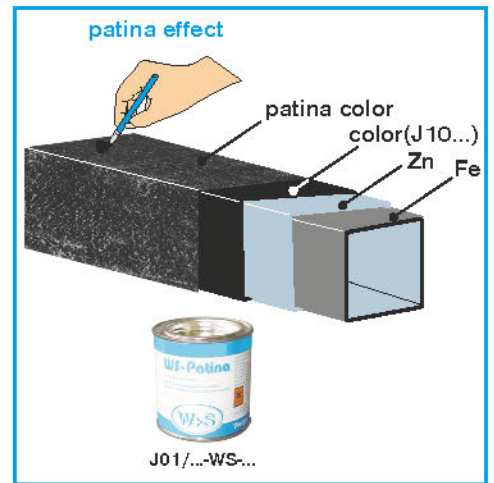


J01/Au-bronze...



J01/Green...

art.	color	volume (ml)
J01/Ag-WS-100	Ag	100
J01/Ag-WS-250	Ag	250
J01/Au-WS-100	Au	100
J01/Au-WS-250	Au	250
J01/Au-Bronze-WS-100	Au, Bronze	100
J01/Au-Bronze-WS-250	Au, Bronze	250
J01/Cu-B-220	Cu	220
J01/Cu-WS-100	Cu	100
J01/Cu-WS-250	Cu	250
J01/Green-WS-100	Green	100
J01/Green-WS-250	Green	250







Ploty

zvárané panely, brány a bránky



art.

YDA



art.

YDA2



art.

YAC



Drevoplasty

podlahy, plotový systém



art.

YDA1



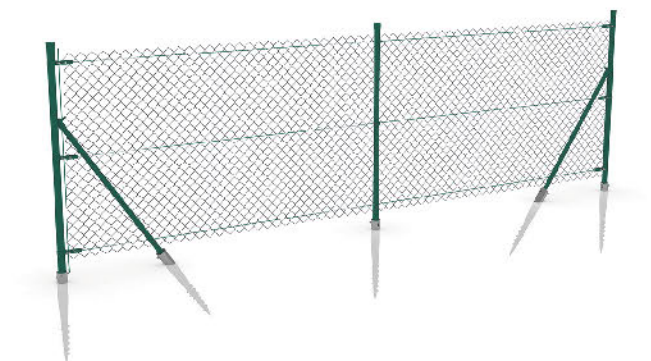
art.

YDA3



art.

YDC



Zemné skrutky

rýchle kotvenie



art.

YFCD1ZN



art.

YFAD1ZN



art.

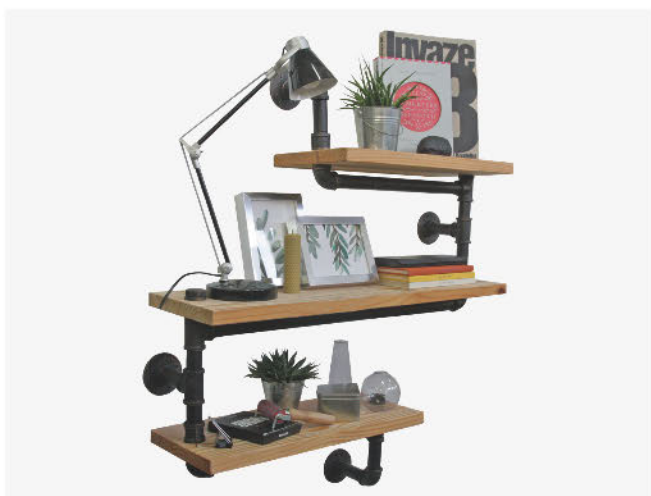
YFBD1ZN



EKOrroll
kovania pre posuvné dvere



art.
YER



EKOpipe
policové systémy



art.
YEP



Prešov
Vajanského 73
080 01
Slovenská republika

i 051 759 5631
ekofence@ekofence.sk

 0918 746 517
shop@ekofence.sk
www.ekofence.sk

 **Prešov**
Vajanského 73
0915 925 291
po@ekofence.sk

 **Trenčín**
Zlatovská 32
0918 725 115
tn@ekofence.sk

 **Humenné**
Tolstého 5A
0908 146 783
he@ekofence.sk

 **Ivanka pri Nitre**
Novozámocká 755
0905 751 462
in@ekofence.sk

 **Žilina**
Kamenná 12
0905 944 835
za@ekofence.sk

 **Nitra**
Chrenovská 16
0905 105 202
nr@ekofence.sk



INOX
2020/2021

art.
KAT-INOX-2020/21



GATE ACCESSORIES
2020/2021

art.
KAT-GATES-2020/21



ATOMATIONS
2020/2021

art.
KAT-AUTOMATIONS-2020/21



FORGED COMPONENTS
2020/2021

art.
KAT-FORGED-2020/21



PORTFOLIO
2020/2021

art.
KAT-PORTFOLIO-2020/21

SUPPORT

AISI 304	nerezová oceľ	stal nierdzewna	rozsdamentes acél	stainless steel	Edelstahl	INOX
Fe	železo	żelazo	vas	iron	Eisen	fer
Zn	zinok	cynk	cink	zinc	Zink	zinc
Cu	meď	miedź	réz	copper	Kupfer	cuivre
Brass	mosadz	miedź	sárgaréz	brass	Messing	laiton
Cast iron	liatina	żeliwo	öntöttvas	Cast iron	Gusseisen	fonte
ALUMINIUM	hlinik	aluminium	aluminium	aluminium	Aluminium	aluminium
PVC	PVC	PVC	PVC	PVC	PVC	PVC
Beech	buk	buk	bükk	beech	Buche	hêtre
Spruce	smrek	fwierk	lucfenyő	spruce	Fichte	épicéa

satin	brus K320	szlif K320	szácsiszolt K320	brushed K320	geschliffen K320	brossé K320
raw	surový	surowy	nyers	raw	roh	brossé
black	čierny	czarny	fekete	black	schwarz	noir
white	biely	biały	fehér	white	weiß	blanc
gray	šivý	siwy	szürke	gray	grau	gris
lacquer	lak	lakier	lakk	lacquer	Lack	laque
~	približný rozmer	przybliżone wymiary	közeliítő méretek	approximate dimension	die Abmessungen sind ungefähr	dimensions approximatives
TOP	najpredávanejšie	bestseller	legjobban eladott	best seller	Bestseller	best-seller
new	novinka 2019	nowość 2019	új 2019	new 2019	Neuheit 2019	nouveau 2019
new	novinka 2020	nowość 2020	új 2020	new 2020	Neuheit 2020	nouveau 2020

LEGEND

UMAKOV SK



KROMPACHY Hornádska 337 053 42	+421 517 911 491 +421 905 681 337 +421 905 429 377 info@umakovshop.sk	+421 908 944 153 obchod1@umakov.sk	+421 910 262 707 obchod2@umakov.sk	+421 908 986 081 obchod3@umakov.sk
SERVIS +421 910 262 820 +421 911 664 245 +421 911 383 645 servis@umakov.sk	REKLAMÁCIE +421 911 915 952 +421 514 881 915 reklamacie@umakov.sk	ÚČTOVNÉ ODDELENIE +421 911 080 261 +421 911 750 326 +421 514 881 910-2 uctovne@umakov.sk	MARKETING +421 915 781 139 marketing@umakov.sk	
BRATISLAVA Rožňavská 1 831 04	+421 917 739 412 +421 904 644 378 ba@umakov.sk	BANSKÁ BYSTRICA Zvolenská cesta 17 974 05	+421 905 304 548 +421 911 664 245 bb@umakov.sk	
PREŠOV Lubochnianska 7 080 01	+421 908 944 153 po@umakov.sk	REVÚCA +421 911 664 245 ra@umakov.sk		

UMAKOV CZ



PRAHA - OTICE Otice 40 251 63 Strančice	+ 420 771 120 121 info@umakov.cz	Umakov CZ s.r.o. IČ: 01692771 DIČ: CZ01692771		
www.umakov.cz objednavky@umakov.cz	+420 608 743 164 obchod1@umakov.cz	+420 774 533 989 obchod2@umakov.cz	+420 608 313 799 obchod3@umakov.cz	
SERVIS +420 778 001 899 +420 775 455 079 servis@umakov.cz	REKLAMACE +421 911 915 952 reklamace@umakov.cz	ÚČETNÍ ODDELENÍ +420 778 065 444 +420 608 313 799 ucetni@umakov.cz		
ŘÍČANY U BRNA Nám. Osvobození 63 664 82	+420 608 743 164 +420 731 733 989 praha@umakov.cz	HRADEC KRÁLOVÉ Náchodská 607 503 01	+420 778 001 899 +420 774 338 660 hk@umakov.sk	

UMAKOW PL



ZABRZE A. Pawliczka 27A 41-800	+48 517 534 197 info@umakov.pl	+48 517 534 197 sprzedaz1@umakov.pl	+48 500 110 199 sprzedaz2@umakov.pl	+48 668 494 940 sprzedaz3@umakov.pl
GDAŃSK Województwa: Pomorskie Warmińsko-mazurskie Kujawsko-pomorskie Zachodniopomorskie +48 735 419 155 +48 538 110 766 gdansk@umakov.pl	RADOM Województwa: Podlaskie Lubelskie Mazowieckie Świętokrzyskie Łódzkie +48 664 855 695 radom@umakov.pl	NOWY SĄCZ Województwa: Małopolskie Podkarpackie Śląskie +48 510 696 236 nowysacz@umakov.pl	POZNAŃ Województwa: Lubuskie Wielkopolskie Dolnośląskie Opolskie +48 602 335 611 poznanz@umakov.pl	

UMAKOV HU



BUDAPEST Csonka János út.1 2142	3628920870-9 info@umakov.hu	+ 36 306 446 653 ertekesites1@umakov.hu	+ 36 305 754 157 ertekesites2@umakov.hu	+ 36 306 446 653 ertekesites3@umakov.hu
www.umakov.hu megrendeles@umakov.hu	+ 36 307 572 009 ertekesites4@umakov.hu	BUDAPEST + 36 305 662 474 hungary3@umakov.hu	MISKOLC + 36 301 610 011 miskolc@umakov.hu	

PARTNER EU

www.umakovshop.com





UMAKOV SK

www.umakov.sk
umakov@umakov.sk
+421 908 994 153
+421 905 681 337

UMAKOV CZ

www.umakov.cz
umakov@umakov.cz
+420 771 120 121
+420 608 313 799

UMAKOW PL

www.umakow.pl
umakow@umakow.pl
+48 517 534 197
+48 510 696 236

UMAKOV HU

www.umakov.hu
umakov@umakov.hu
+36 306 446 663
+36 305 754 157

UMAKOV DE

www.umakov.de
umakov@umakov.de
+421 907 684 761
+421 51 4881 933

UMAKOV UK

www.umakovshop.com
uk@umakovshop.com
+421 915 093 533
+421 51 4881 931

UMAKOV EUROPE

www.umakovshop.com
europe@umakovshop.com
+421 915 965 141
+421 51 4881 930

UMAKOV SCANDINAVIA

www.umakovshop.com
scandinavia@umakovshop.com
+421 915 093 533
+421 51 4881 931

UMAKOV RUSSIA

www.umakovshop.com
russia@umakovshop.com
+421 915 093 533
+421 51 4881 931

UMAKOV FRANCE

www.umakovshop.fr
info@umakovshop.fr
tel: +33 (0)2 31 39 49 80
fax: +33 (0)2 31 39 66 74

UMAKOV WORLD

www.umakovshop.com
info@umakovshop.com
+421 915 965 141
+421 51 4881 930



EUROPEAN UNION